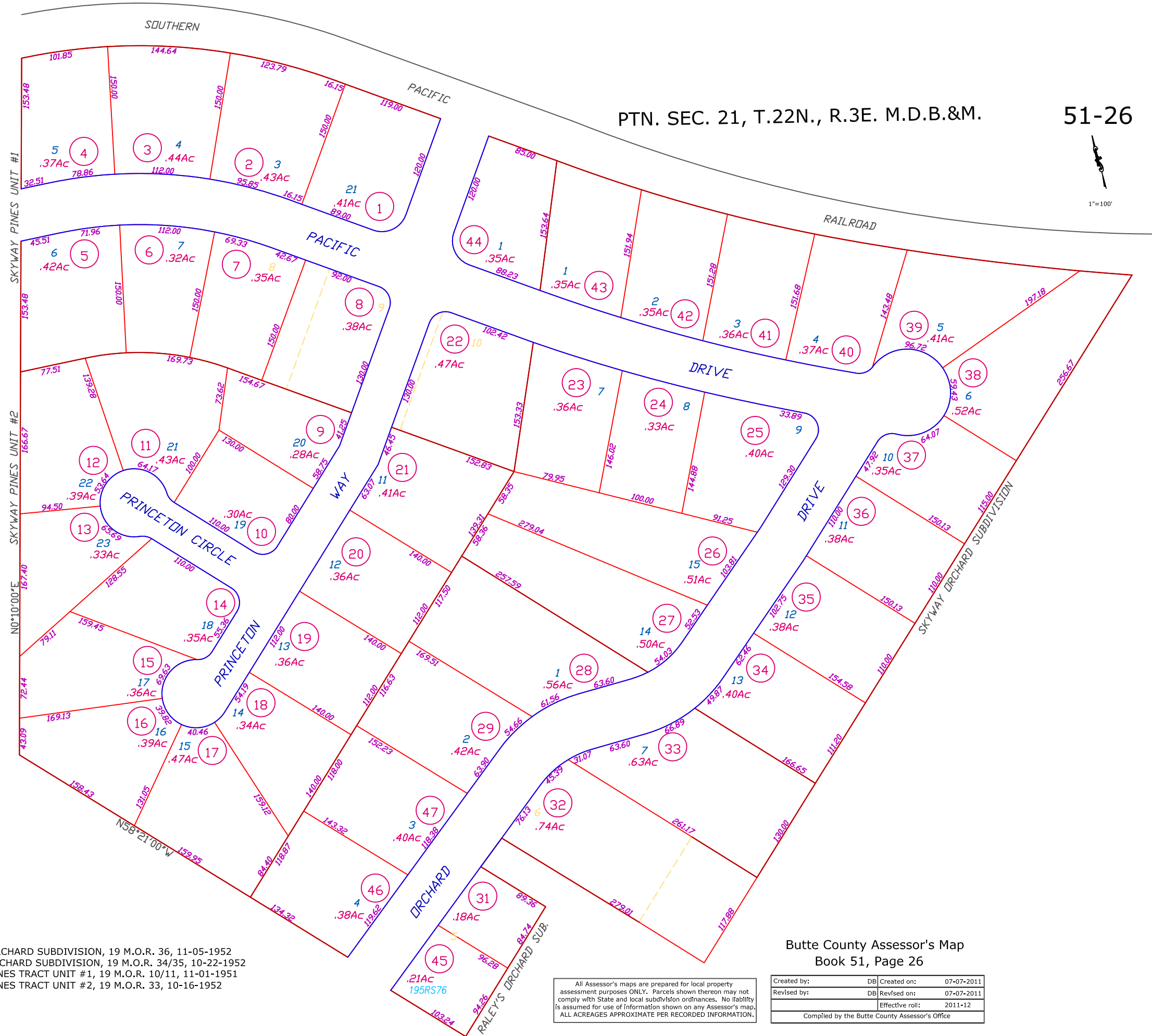


SOUTHERN

PTN. SEC. 21, T.22N., R.3E. M.D.B.&M.

51-26

1"=100'



SKYWAY ORCHARD SUBDIVISION, 19 M.O.R. 36, 11-05-1952
 RALEY'S ORCHARD SUBDIVISION, 19 M.O.R. 34/35, 10-22-1952
 SKYWAY PINES TRACT UNIT #1, 19 M.O.R. 10/11, 11-01-1951
 SKYWAY PINES TRACT UNIT #2, 19 M.O.R. 33, 10-16-1952

Butte County Assessor's Map
 Book 51, Page 26

All Assessor's maps are prepared for local property assessment purposes ONLY. Parcels shown thereon may not comply with State and local subdivision ordinances. No liability is assumed for use of information shown on any Assessor's map. ALL ACRESAGES APPROXIMATE PER RECORDED INFORMATION.

Created by:	DB	Created on:	07-07-2011
Revised by:	DB	Revised on:	07-07-2011
		Effective roll:	2011-12
Compiled by the Butte County Assessor's Office			